

**LOUISIANA RENTS**

**Right Tools.  
Right Place.  
Right Now.**



**Louisiana Rents**



## Air Compressors

	<u>Duty Cycle</u>	<u>CFM</u>	<u>Engine Make</u>	<u>Unit Weight</u>
Atlas Copco	100psi	185	CAT 2.2	2,300 lbs.



## Generators

	<u>Engine</u>	<u>Watts Max/Cont</u>	<u>Voltage</u>	<u>HP/(KW)</u>	<u>Operating Weight</u>
Multiquip	Honda GA6HA	6000/5000	120V/240V	9.5(7.1)	194 lbs.



## Fork Lifts

	<u>Unit Weight</u>	<u>Fork Height</u>	<u>Unit Capacity</u>	<u>Engine</u>	<u>Fork Type</u>
Mastercraft	21,500 lbs.	21'	8,000 lbs.	Cat 3054	3 Stage Roller



## Motor Graders

	<u>Net Power</u>	<u>Operating Wt.</u>	<u>Blade Length</u>
LeeBoy 685B Motor Grader	110 hp	15,200 lbs.	10'
LeeBoy 785 Motor Grader	130 hp	25,300 lbs.	12'
Cat 135H Motor Grader	135 hp	28,550 lbs.	12'
Cat 12H Motor Grader	145 hp	31,410 lbs.	12'
Cat 12M Motor Grader	140 hp	31,410 lbs.	12'
Cat 140H Motor Grader	165 hp	32,460 lbs.	12'
Cat 140M Motor Grader	183 hp	33,356 lbs.	12'



## Water Truck

	<u>Tank Size</u>
Diesel Water Truck	2,000 gal. Tank 4,000 gal. Tank



## Brooms

	<u>Horsepower</u>	<u>Rotation Speed</u>	<u>Travel Speed</u>	<u>Broom Width</u>
Broce Broom Sweeper	80 hp	250 RPM	0-12	8'
Broce Broom MK-1	93 hp	25 RPM	0-12	8'



## Light Towers

	Wattage	Tower Height	Run Time	Unit Weight
Allmand Light Tower	4000	30'	65 hrs.	1,600 lbs.



## Lights

	Type	Lamp	Weight
Globug Balloon	Workstand	1KW Metal Halide	139 lbs.



## Wheeled Excavators

	Op. Weight	Max Reach	Max Depth	Net Power
Cat M315	36,710 lbs.	30' 11"	18' 10"	121 hp
Cat M316	40,120 lbs.	30' 11"	19' 5"	138 hp
Cat M318	43,420 lbs.	31' 7"	20' 4"	151 hp



## Trenchers

		Gross Engine Power	Max Dig Depth	Operating Weight
Astec	RT60 Walk Behind	13 hp	24 in to 36 in	720 lbs.
	RT130 Walk Behind	13 hp	36 in	903 lbs.
	RT160 Walk Behind	24 hp	24 in, 36 in, 48 in	1,530 lbs.
	RT360	32 hp	80.9 in to 79.5 in to 55.7 in	3,906 lbs.
	RT460	37 hp	60 in	5,660 lbs.
	RT560	51 hp	72 in	7,000 lbs.
	RT660 II	75 hp	72 in	10,304 lbs.
	RT960	99 hp	84 in	12,700 lbs.
	RT1160	115 hp	84 in	14,439 lbs.
	TF300B	18.5 hp	45 in	2,450 lbs.
	Maxi-Sneaker	37 hp	24 in to 36 in	2,346 lbs.



## Booms

	Working Height	Platform Height	Wheelbase Width	Lift Capacity	Unit Weight
Genie S45D 4WD-Boom	51'	45'	7' 3"	500 lbs.	11,650 lbs.
Genie S65D 4WD-Boom	71'	65'	9'	500 lbs.	28,400 lbs.
Genie GS1930 DC-Scissor	25'	19'	4' 4"	500 lbs.	2,702 lbs.
Genie GS2646 DC-Scissor	32'	26'	6' 1"	1,000 lbs.	4,312 lbs.



Louisiana Rents



www.LouisianaRentalStore.com

## Articulated Truck

	Flywheel HP	Operating Wt.	Capacity
Cat 725	301 hp	49,075 lbs.	26 tons
Cat 730	317 hp	50,375 lbs.	31 tons
Cat 740	436 hp	72,400 lbs.	42 tons



## Backhoe Loaders

	Weight	Height	Length	Width	HP	Capacity	Dig. Depth
Cat 416D	15,257 lbs.	11' 9"	22' 10"	7' 9"	78	1.25 yd <sup>3</sup>	18' 1"
Cat 420D	15,772 lbs.	11' 9"	23' 0"	7' 9"	93	1.31 yd <sup>3</sup>	18' 1"



## Multi Terrain Loaders

	Net Power	Operating Capacity	Ground Weight	Pressure
Cat 247	57 hp	1,950 lbs.	6,668 lbs.	3.8 psi
Cat 257	57 hp	2,310 lbs.	7,651 lbs.	4.3 psi
Cat 267	70 hp	2,900 lbs.	9,371 lbs.	3.1 psi
Cat 277C	82 hp	3,200 lbs.	9,495 lbs.	3.7 psi
Cat 287C	82 hp	3,800 lbs.	9,958 lbs.	3.9 psi
Cat 297C	90 hp	4,200 lbs.	10,139 lbs.	4.0 psi



## Compact Track Loaders

	Engine Model	Net Power	Rated Operating Capacities: 50% Tipping Load
279C	Cat C3.4T	82 hp	3200 lbs.
289C	Cat C3.4T	82 hp	3850 lbs.
299C	Cat C3.4T	90 hp	4150 lbs.



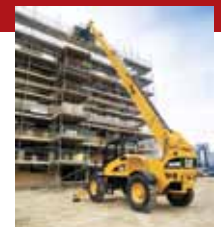
## Skid Steer Loaders

	Net Power	Operating Capacity	Operating Weight	Breakout Force/Lift	Breakout Force/Tilt
Model 232	49 hp	1,750 lbs.	6,661 lbs.	3,411 lbs.	3,462 lbs.
Model 236	59 hp	1,750 lbs.	7,050 lbs.	2,112 lbs.	2,487 lbs.
Model 242	57 hp	2,000 lbs.	6,802 lbs.	3,668 lbs.	3,723 lbs.
Model 246	74 hp	2,000 lbs.	7,225 lbs.	2,112 lbs.	2,487 lbs.
Model 248	76 hp	2,000 lbs.	7,321 lbs.	4,406 lbs.	5,069 lbs.
Model 252	70 hp	2,500 lbs.	7,832 lbs.	5,063 lbs.	5,098 lbs.
Model 262	78 hp	2,700 lbs.	7,861 lbs.	5,063 lbs.	5,098 lbs.



## Telescopic Handlers

	Weight	Height	Length	Width	Lift Capac.	Max. Lift Height	Max. Reach	Net Power
CatTL642	20,240 lbs.	7' 10"	18' 11"	8' 4"	6,500 lbs.	42' 0"	30' 0"	94.5 hp
CatTL943	26,050 lbs.	8' 0"	20' 6"	7' 11"	9,000 lbs.	43' 0"	31' 4"	94.5 hp
CatTL1055	34,700 lbs.	8' 5"	20' 9"	8' 5"	10,000 lbs.	55' 0"	42' 0"	118.7 hp
CatTL1255	35,400 lbs.	8' 5"	20' 9"	8' 5"	12,000 lbs.	54' 0"	42' 0"	134.9 hp



## Wheel Loaders

	Flywheel HP	Oper. Weight	Bucket Capac. - yd <sup>3</sup>
Cat 924	105 hp	20,081 lbs.	1.8 to 2.25 yd <sup>3</sup>
Cat 924GZ	129 hp	23,920 lbs.	2.25 to 2.7 yd <sup>3</sup>
Cat 928	125 hp	25,554 lbs.	2.5 to 2.9 yd <sup>3</sup>
Cat 928GZ	143 hp	27,140 lbs.	2.6 to 3 yd <sup>3</sup>
Cat 930G	159 hp	28,725 lbs.	3.24 yd <sup>3</sup>
Cat 938	180 hp	29,657 lbs.	3.0 to 4.0 yd <sup>3</sup>
Cat 950	196 hp	39,200 lbs.	3.5 to 4.5 yd <sup>3</sup>
Cat 962	200 hp	40,889 lbs.	4.25 to 5.0 yd <sup>3</sup>
Cat 966	260 hp	50,160 lbs.	4.5 to 5.5 yd <sup>3</sup>
Cat 972	285 hp	56,180 lbs.	5.0 to 6.0 yd <sup>3</sup>



## Compact Excavators

	Net Power	Op. Weight W / Cab	Max. Digging Depth / Std. Stk
Cat 302.5	22.9 hp	6,015 lbs.	8' 7"
Cat 303 CR	26 hp	7,524 lbs.	10' 11"
Cat 303.5	25 hp	7,810 lbs.	10' 4"
Cat 304 CR	37 hp	9,896 lbs.	12' 4"
Cat 304.5	38 hp	10,130 lbs.	11' 7"
Cat 305 CR	42 hp	10,580 lbs.	12' 11"
Cat 307	54 hp	14,915 lbs.	15' 3"
Cat 308 Swing Boom	55.6 hp	18,519 lbs.	13' 7"
Cat 308 CR	54 hp	17,730 lbs.	15' 5"



## Excavators

	Op. Weight	Height	Length	Width	HP	Digging Depth
Cat 312	28,080 lbs.	9' 1"	24' 11"	8' 2"	84 hp	19' 10"
Cat 314CL CR	32,590 lbs.	8' 11"	24' 4"	8' 2"	90 hp	19' 6"
Cat 315	36,000 lbs.	9' 6"	28' 0"	8' 6"	99 hp	19' 10"
Cat 320D L	44,820 lbs.	9' 11"	31' 0"	9' 6"	148 hp	22' 1"
Cat 320C LU	50,700 lbs.	9' 8"	29' 3"	9' 2"	138 hp	25' 1"
Cat 324D L	54,660 lbs.	10' 5"	33' 0"	10' 10"	188 hp	22' 6"
Cat 324D L Long Reach	54,660 lbs.	10' 4"	47' 1"	11' 1"	188 hp	47' 11"
Cat 325D L	64,460 lbs.	11' 11"	34' 2"	11' 1"	204 hp	25' 8"
Cat 325D Long Reach	74,075 lbs.	10' 7"	47' 2"	11' 1"	190 hp	37' 2"
Cat 329D L	64,460 lbs.	11' 11"	34' 2"	11' 1"	204 hp	25' 8"
Cat 330D L	79,700 lbs.	11' 11"	36' 9"	11' 1"	268 hp	26' 10"
Cat 330D Long Reach	87,479 lbs.	11' 11"	44' 10"	11' 1"	270 hp	42' 2"
Cat 336D L	80,464 lbs.	11' 11"	36' 9"	11' 1"	268 hp	26' 10"
Cat 345D L	100,040 lbs.	12' 1"	40' 11"	11' 11"	380 hp	29' 3"



## Dozers

	Op. Weight	Height	Overall Length	Unit Width	HP
Cat D3G LGP	17,160 lbs.	9' 1"	13' 2"	7' 7"	70
Cat D3K	17,185 lbs.	15' 1"	14' 0"	6' 2"	74
Cat D4G LGP	18,073 lbs.	9' 1"	13' 3"	7' 6"	80
Cat D4K	17,961 lbs.	9' 1"	14' 0"	6' 6"	84
Cat D5G XL	19,662 lbs.	9' 1"	14' 3"	6' 9"	90
Cat D5G LGP	20,434 lbs.	9' 10"	13' 0"	7' 10"	90
Cat D5K LGP	20,741 lbs.	9' 10"	14' 10"	7' 9"	96
Cat D6K XL	28,409 lbs.	10' 1"	16' 4"	9' 3"	125
Cat D6K LGP	29,690 lbs.	10' 1"	16' 4"	10' 3"	125
Cat D6N XL	34,209 lbs.	10' 1"	16' 2"	8' 2"	145
Cat D6N LGP	38,879 lbs.	10' 6"	17' 8"	9' 11"	145
Cat D6T XL	41,298 lbs.	10' 6"	12' 8"	8' 8"	200
Cat D6T LGP	44,795 lbs.	10' 6"	12' 0"	8' 8"	185



## Pumps

	Discharge In	Voltage	HP	Weight
Submersible Pump Multiquip ST2037	2	120 1Ø	1.0	31 lbs.
	Suction x Discharge In	GPM	HP	Weight
Centrifugal Pump Multiquip OP2H#	2x2	158	3.5	53 lbs.
	Suction x Discharge In	GPM	HP	Weight
Trash Pump Multiquip QP3TH	3x3	396	7.1	163 lbs.



Louisiana Rents



www.LouisianaRentalStore.com

## Rollers

	<b>Flywheel Type</b>	<b>Operating Power</b>	<b>Compaction Weight</b>	<b>Width</b>
Cat CB-14	Vibra. Asphalt	21 hp	3,571 lbs.	34"
Cat CB-224	Vibra. Asphalt	31 hp	5,750 lbs.	47"
Cat CB-334	Vibra. Asphalt	50 hp	8,731 lbs.	51"
Cat CB-534	Vibra. Asphalt	130 hp	22,050 lbs.	67"
Cat CB-534 XW	Vibra. Asphalt	130 hp	24,917 lbs.	79"
Cat CB-54	Vibra. Asphalt	99.5 hp	20,944 lbs.	74"
Cat CB-634	Vibra. Asphalt	145 hp	28,160 lbs.	84"
Cat CS-54	Vibra. Soil	130 hp	23,120 lbs.	84"
Cat CS-56	Vibra. Soil	156 hp	25,164 lbs.	84"
Cat CS-433	Vibra. Soil	100 hp	14,875 lbs.	66"
Cat CP-56	Vibra. Soil	156 hp	25,047 lbs.	84"
Cat CP-433	Vibra. Soil	105 hp	15,597 lbs.	66"



## Rammers & Plate Compactors

	<b>Impact Force LBS</b>	<b>Engine</b>	<b>HP</b>	<b>Operating Weight</b>
Multiquip MTX70 Rammer	3,350 lbs.	Honda GX100	2.8	165 lbs.

	<b>Centrifgal Force LBS</b>	<b>Engine</b>	<b>HP</b>	<b>Operating Weight</b>
Multiquip MVC88VGHW Plate Compactor	3,450 lbs.	Honda GX160	4.8	218 lbs.



## Multiquip/RAMMAX Viper Trench Roller

	<b>Centrifgal Force LBS</b>	<b>Drum Width</b>	<b>HP</b>	<b>Operating Weight</b>
Multiquip RX1510CI24	15,543 lbs.	24"	18	3,373 lbs.
Multiquip RX1510CI33	15,543 lbs.	33"	18	3,373 lbs.



## Concrete Equipment

	<b>Capacity Cu Ft</b>	<b>Drum Opening</b>	<b>Engine</b>	<b>HP</b>
Multiquip MC94SH8 Concrete Mixer	9	21	Honda	7.1

	<b>Voltage</b>	<b>Amps</b>	<b>RPM</b>	<b>Weight</b>
Multiquip CV2 Concrete Vibrator (with 10' Shaft & 2" Head)	120V	15	18,000	13 lbs.

	<b>Blade</b>	<b>HP</b>	<b>Weight</b>
Multiquip Walk-Behind Saw	18"	11	270 lbs.
Multiquip Cut-Off Saw	14"	4.7	21 lbs.



Louisiana Rents



www.LouisianaRentalStore.com

Not only can you count on **Louisiana Rents Stores** to have high quality, low-hour Cat® and top brands construction equipment and attachment rentals, but we also have something no other rental store has: the Caterpillar name.

Louisiana Rents locations are equipped with New and Used Cat equipment and other top brands construction equipment – all maintained by our expert mechanics. We have all the tools you need to get the job done right. Plus, you'll get the quick response you need, along with an experienced staff.

Daily, weekly, monthly or longer rentals are available along with competitive rates, on site delivery, and fast, knowledgeable service. Big or small, Louisiana Rents rents it all. We also sell new equipment from all of our top brand vendors.

Here are a few other good reasons to rent from Louisiana Rents:

- No Capital Investment
- Supplement Your Core Fleet
- Try It Before You Buy It
- Expert Responsive Service
- Eliminate Storage Costs
- No Maintenance Costs
- Minimize Costly Breakdowns
- Complete Your Job More Efficiently

We look forward to providing you with excellent service for all of your equipment rental and sales needs in the future.

**Louisiana Rents**



[www.LouisianaRentalStore.com](http://www.LouisianaRentalStore.com)

**(800) 766-4070**



# Louisiana Rents



[www.LouisianaRentalStore.com](http://www.LouisianaRentalStore.com)

**Serving: Industrial & Construction Industries.**

**Call our toll free number for a location nearest you.**

**(800) 766-4070**



#### **Alexandria**

3575 N Bolton Avenue  
Alexandria, LA 71303  
(318) 443-3503

#### **Baton Rouge**

10414 Airline Hwy  
Baton Rouge, LA 70816  
(225) 296-0020

#### **Belle Chasse**

204 Engineers Road  
Belle Chasse, LA 70037  
(504) 433-1350

#### **Bossier City**

5410 Kennon Lane  
Bossier City, LA 71112  
(318) 747-1300

#### **Hammond**

42440 Jackson Road  
Hammond, LA 70403  
(985) 340-2820

#### **Lafayette**

1406 NE Evangeline Thruway  
Lafayette, LA 70501  
(337) 593-0220

#### **Lake Charles**

503 Highway 397  
Lake Charles, LA 70615  
(337) 437-7117

#### **Monroe**

2201 Ticheli Road  
Monroe, LA 71202  
(318) 323-7799

#### **Reserve**

3799 West Airline Hwy  
Reserve, LA 70084  
(985) 536-1121

